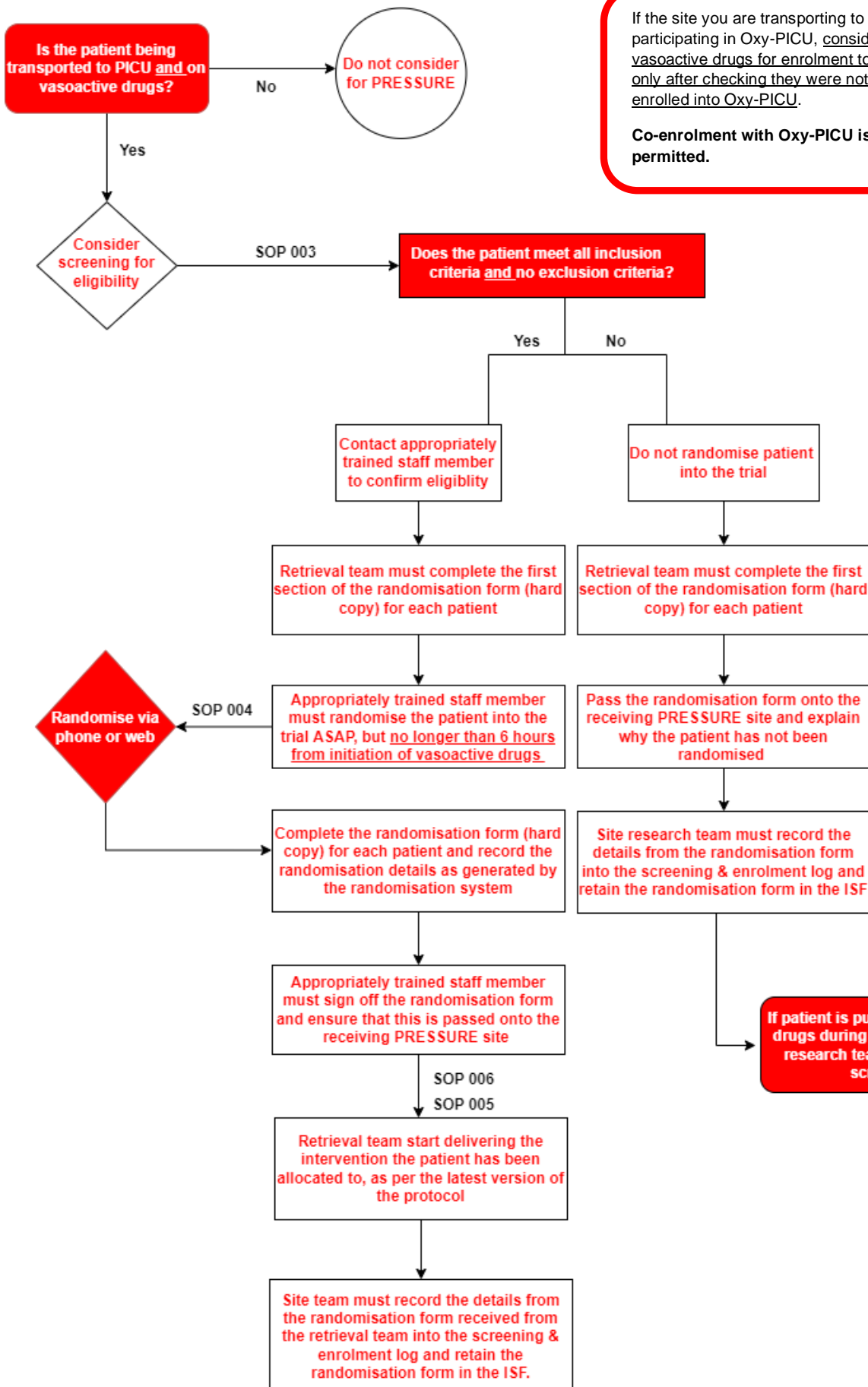




PRESSURE Trial Screening & enrolment flowchart

For patients identified by the retrieval / transport teams



If the site you are transporting to is also participating in Oxy-PICU, consider patients on vasoactive drugs for enrolment to PRESSURE only after checking they were not previously enrolled into Oxy-PICU.

Co-enrolment with Oxy-PICU is not permitted.